

ROUTINE

MWO effective date is 31 July 2004 and completion date is 31 July 2006.

MWO 10-4610-232-30-1

MODIFICATION WORK ORDER

ROWPU-1 PRESSURE SWITCH PANEL ASSEMBLY UPGRADE MODIFICATION

NSN 4610-01-371-1790

HEADQUARTERS, DEPARTMENT OF THE ARMY, WASHINGTON, DC

(31 July 2004)

REPORTING ERRORS AND RECOMMENDING IMPROVEMENTS

You can help improve this publication. If you find any mistakes or if you know of a way to improve the procedures, please let us know. Submit your DA Form 2028 (Recommended Changes to Equipment Technical Publications), through the Internet, on the Army Electronic Product Support (AEPS) website. The Internet address is <http://aeprs.ria.army.mil>. If you need a password, scroll down and click on "ACCESS REQUEST FORM." The DA Form 2028 is located in the ONLINE FORMS PROCESSING section of the AEPS. Fill out the form and click on SUBMIT. Using this form on the AEPS will enable us to respond quicker to your comments and better manage the DA Form 2028 program. You may also mail, fax, or e-mail your letter or DA Form 2028 direct to: AMSTA-LC-CI / TECH PUBS, TACOM-RI, 1 Rock Island Arsenal, Rock Island, IL 61299-7630. The e-mail address is TACOM-TECH-PUBS@ria.army.mil. The fax number is DSN 793-0726 or Commercial (309) 782-0726.

DISTRIBUTION STATEMENT A. Approved for public release; distribution is unlimited.

1. **PURPOSE.** The purpose of this modification work order (MWO) is to replace all pressure switches in the Reverse Osmosis Water Purification Unit (ROWPU), Model ROWPU-1, with new pressure switches and all applicable hardware, in order to eliminate premature failing of switches.
2. **PRIORITY.** This modification is classified **ROUTINE**.
3. **END ITEM(S) OR SYSTEM(S) TO BE MODIFIED.**

End Items to be Modified

Nomenclature	NSN*	P/N	CAGEC ^t	Model Number	Serial Number
Water Purification Unit, Reverse Osmosis, 3,000 GPH	4610-01-371-1790	ROWPU-1	94833	ROWPU-1	All vehicles

* national stock number

^t commercial and government entity code

4. **MODULE(S) (COMPONENTS, ASSEMBLIES, SUBASSEMBLIES, BOARDS, AND CARDS) TO BE MODIFIED.** Not applicable.
5. **PART(S) TO BE MODIFIED.** Not applicable.
6. **APPLICATION.**
 - a. *Time compliance schedule:* MWO effective date is 31 July 2004, and completion date is 31 July 2006.
 - b. *Lowest level maintenance authorized to apply MWO:* 30 – Direct Support.
 - c. *Work force and man-hour requirements for application of the MWO to a single unit, end item, or system:* Requirements are as follows:

Requirements

Work Force/Skills	Man-Hours
1 – QM and Chem. Equip Repairer(MOS 63J or equivalent)	5.0

- d. *MWOs that must be applied prior to application of this MWO:* Not applicable.
 - e. *Additional information:* Not applicable.
7. **TECHNICAL PUBLICATIONS AFFECTED/CHANGED.** The following TMs are being affected/changed as a result of this MWO:

Publications Affected

Publication	Date
TM 10-4610-232-24P	31 January 2000
TM 10-4610-232-34	1 September 1999

8. MWO KIT(S)/PART(S) AND THEIR DISPOSITION.

- a. *Kit needed to apply this MWO:*

(1) Kit required to accomplish MWO:

Modification Kit

Nomenclature	NSN	Part Number	CAGEC	Security Classification
Pressure switch modification kit	4610-01-502-9781	156K0037	94833	Unclassified

(2) Shipping data:

Shipping Data

Part Number (CAGEC)	Weight	Dimensions	Cubic Displacement
156K0037 (94833)	30 lbs (13.6 kg)	13 x 13 x 13 in (33 x 33 x 33 cm)	1.27 cubic ft

b. Contents of MWO kits:

Contents of Kit(s)

Part Number (CAGEC)	NSN	Nomenclature	Qty
500K2358-1 (94833)		Differential pressure switch	1
500K2358-2 (94833)		Differential pressure switch	2
500K2357-1 (94833)		Pressure switch	1
500K2357-2 (94833)		Pressure switch	1
500K2357-3 (94833)		Pressure switch	1
500K2357-4 (94833)		Pressure switch	1
500K2357-5 (94833)		Pressure switch	1
156K0005 (94833)		Tube adapter	9
13229E0704-2		Tube tee	9
13229E0382		Tube plug	6
156K0001K10		Tube	1
13229E0706-1 (97403)	4730-00-465-1235	Tube elbow	1
156K0001K13		Tube	1
156K0001K16		Tube	1
13229E1255-2 (97403)	4730-01-348-6246	Pipe nipple	1
ANSI-B16.11 (80204)		Hex bushing	7
13229E0753-4 (97403)	5975-01-353-3190	Elbow cable adapter	6
13229E0738-6 (97403)	5975-01-355-7891	Straight cable adapter	4
MS15795-808 (80205)	5310-00-619-1148	Flatwasher	43
MS35338-138 (80205)	5310-00-933-8120	Lockwasher	43
MS35649-204 (96906)	5310-00-934-9760	Hex nut	23
13229E0189 (97403)	4730-01-350-9033	Pipe union	1
MS51959-65 (96906)	5305-00-701-5078	Screw	23
MS51958-64 (80205)	5305-00-059-3660	Screw	20
156K0002		Adapter plate	2
156K0003		Adapter plate	2
156K0004		Adapter plate	2
156K0006		Adapter plate	1
156K0001K69		Tube	1
156K0034		Adapter plate	1
156K0035		Pipe reducer	1
156K0036		Wrench	1

c. Bulk and Expendable Material: Not applicable.

- d. *Parts Disposition.* Dispose of excess parts listed below in accordance with AR 710-2 (Inventory Management Supply Policy Below the Wholesale Level), AR 735-5 (Policies and Procedures for Property Accountability), and local policy. Removed parts shall be turned into property disposal office for proper disposal.

Nomenclature	NSN	Part Number (CAGEC)	Qty
Pressure switch	5930-01-348-5049	13229E1115 (97403)	1
Stuffing tube	5975-01-355-7891	13229E0738-6 (97403)	3
Tubing		120-02599-27 (09647)	1
Male elbow	4730-01-076-8903	13229E0689-1 (97403)	1
Marker		120-02456-12 (09647)	1
Screw		13229E40260-158 (97403)	2
Seal washer	5310-01-351-2613	13229E0557-1 (97403)	2
Nut	5310-01-211-9838	H111P363-130M (29372)	2
Pressure switch		13229E0006-2 (97403)	2
Pressure switch		13229E0006-1 (97403)	1
Pressure switch		13229E0010-2 (97403)	1
Pressure switch		13229E0010-1 (97403)	1
Pressure switch		13229E0044 (97403)	1
Pressure switch		13229E0041 (97403)	1
Tube plug		13229E0382 (97403)	6
Tube tee	4730-00-684-3796	4-4-4JBZSS (54938)	9
Straight tube adapter	4730-01-349-7767	13229E0148 (94703)	9
Tube elbow	4730-00-965-1235	MS51820-355 (96906)	1
Tube, metallic		13229E0145K10 (94833)	1
Tube, metallic		13229E0145K16 (94833)	1
Tube, metallic		13229E0145K13 (94833)	2
Pipe union	4730-01-350-9033	13229E0189 (97403)	1
Pipe nipple	4730-01-348-6246	13229E1255-2 (97403)	1
Stuffing tube	5975-01-353-3190	13229E0753-4 (97403)	5
Pipe bushing	4730-00-071-1671	AN 912-7K (88044)	7
Screw	5305-01-351-0881	13229E0072-57 (97403)	19
Lockwasher	5310-00-933-8120	MS35338-138 (96906)	25
Flat washer	5310-00-619-1148	MS15795-808 (96906)	25
Loop clamp	5340-00-878-5257	MS21919WCF-24 (96906)	5
Screw	5305-00-724-7878	MS24693-C94 (96906)	8
Plate		13229E0052 (97403)	2
Screw	5305-00-054-6655	MS51957-31 (96906)	8
Nut		13229E0114-5 (97403)	23

- e. *Mandatory Replacement Parts.* Not applicable.

9. SPECIAL TOOLS; TOOL KITS; JIGS; TEST, MEASUREMENT, AND DIAGNOSTIC EQUIPMENT (TMDE); AND FIXTURES REQUIRED. Tool kits necessary to apply MWO are listed in the following table:

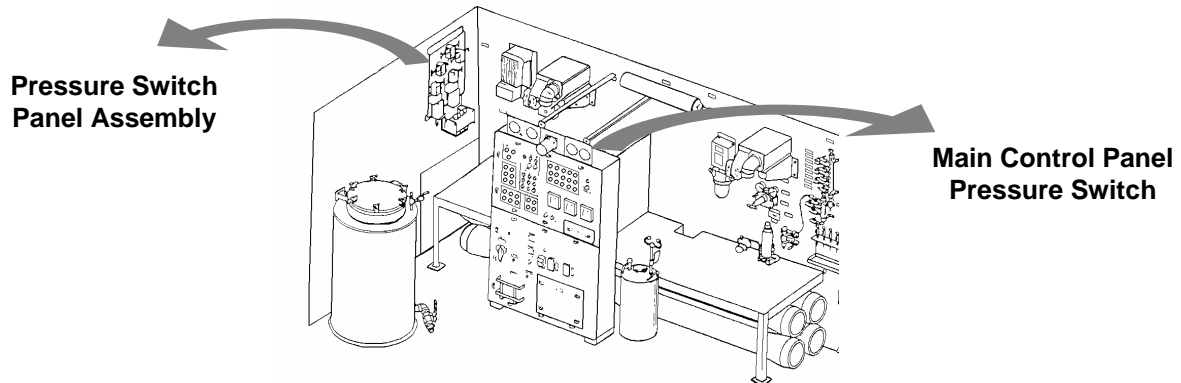
Nomenclature	NSN	CAGEC	Part Number	Qty
Tool Kit, General Mechanic's	5180-00-177-7033	50980	SC 5180-90-CL-N26	1

10. MODIFICATION PROCEDURES.

WARNING

- **Make sure electrical power is disconnected before working on unit. Failure to do so could result in electrical shock, causing serious injury or death to personnel.**
- **Do not wear watches, rings, or dog tags when working on electrical components.**

a. Electrical components and wiring shutdown and inspection.



NOTE

Tag all wires and hoses before disconnecting.

- 1) Make sure ROWPU is shut down and main circuit breaker (CB1) is turned off (TM 10-4610-232-12, para 2-22).
- 2) At pressure switch panel assembly and behind control panel, remove retaining straps and wire tiedown straps as necessary, securing wire leads and cables. Make sure leads and harnesses do not rub against sharp edges or corners.
- 3) Inspect wires for bent, broken, or missing terminals. Clean or replace terminals as necessary.
- 4) Inspect wire leads and cables for overheating damage, frayed or cut insulation, and kinks that may indicate damage to wire strands inside cable. Replace as necessary.

b. Plumbing and piping shutdown and inspection.

WARNING

Plastic and metallic tubes may contain pressure and cause injury to personnel. Be prepared to collect water and avoid water runoff into other components, or damage to equipment may occur.

NOTE

Tag all hoses before disconnecting.

- 1) Remove tiedown straps as necessary, securing hoses. Make sure hoses do not rub against sharp edges or corners.
- 2) Inspect hoses for damage. Clean or replace hoses as necessary.
- 3) Inspect hoses for brittleness, cracks, or kinks. Replace or repair as necessary.

- c. Air system shutdown.

WARNING

Make sure air pressure is vented from manifolds before working on switch panel assembly. Failure to do so could result in exposure to pressured air, causing serious injury to personnel.

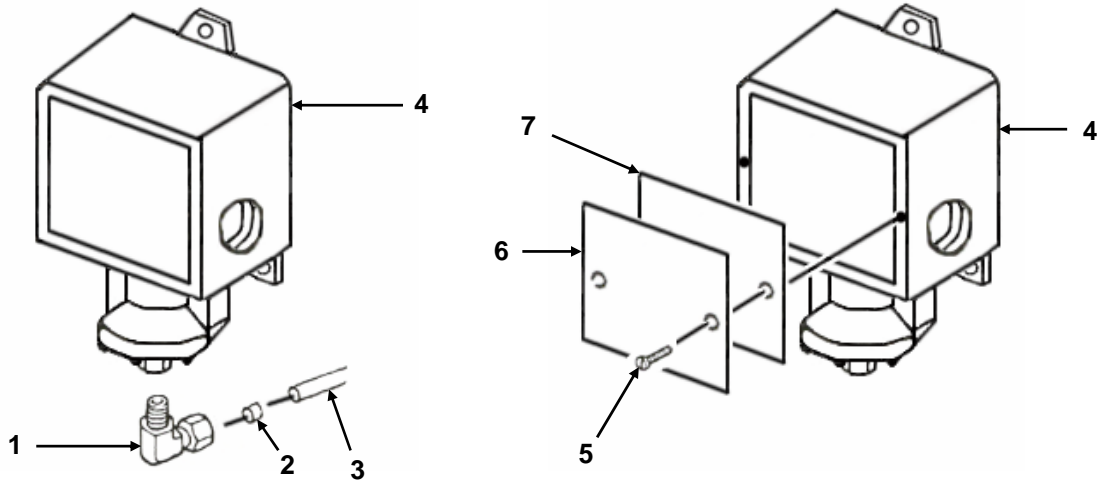
Shut off air compressor and bleed air pressure from manifolds and air filter (TM 10-4610-232-12, para 4-68).

NOTE

Pressure switch PSL8 is located on the top right rear corner of the control panel.

- d. Main control panel pressure switch replacement.

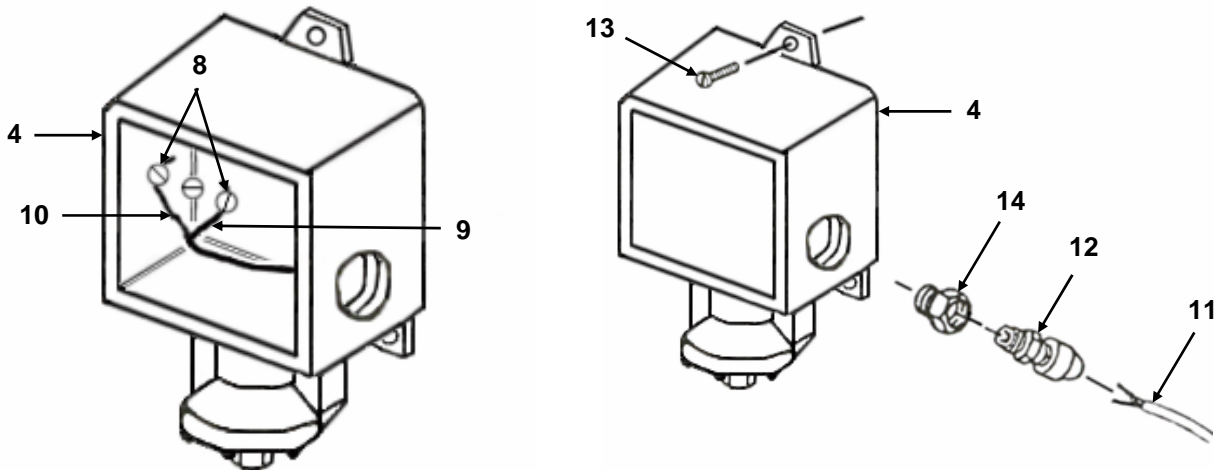
- 1) Remove male elbow (1), marker (2), and metallic tube (3) from pressure switch (4). Set aside.
- 2) Remove two screws (5), pressure switch cover plate (6), and gasket (7) from pressure switch (4) and discard.



NOTE

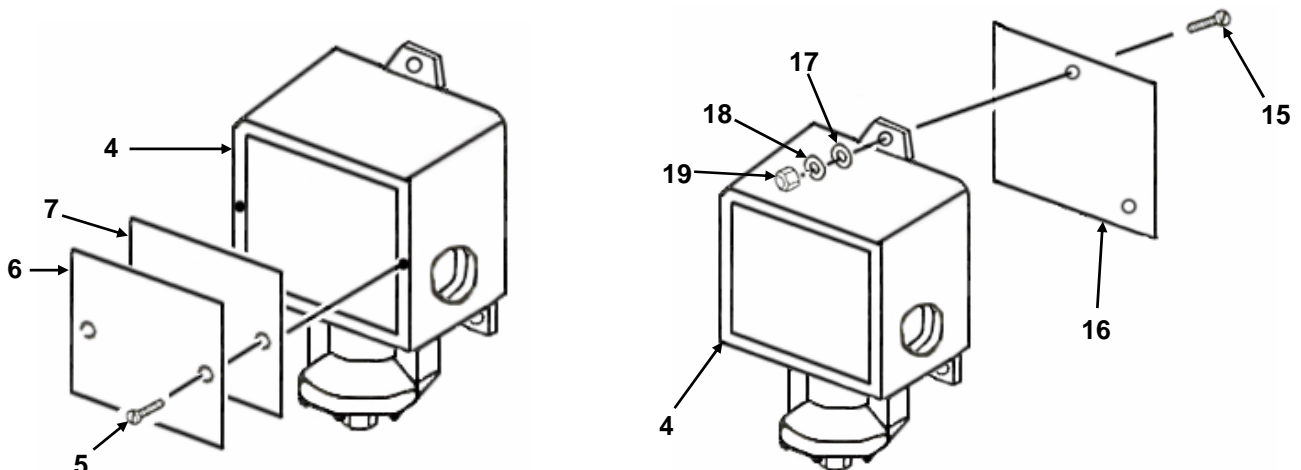
Pressure switches have two wire terminals: white wire is located on common (C) terminal and black wire is located on normally closed (NC) terminal.

- 3) Loosen two terminal screws (8) and remove white wire (9) and black wire (10) from terminal screws (8). Pull cable (11) through pressure switch (4) and stuffing tube (12).
- 4) Remove two screws (13) and pressure switch (4) from control panel. Set aside screws for installation.
- 5) Remove pipe bushing (14) and stuffing tube (12) from pressure switch (4). Set aside pipe bushing for installation.



e. Main control panel pressure switch assembly and installation.

- 1) Remove two screws (5) and pressure switch cover plate (6) and gasket (7) from new pressure switch (500K2357-5) (4) and set aside.
- 2) Install two countersink screws (MS51959-65) (15), adapter plate (156K0034) (16), two flat washers (MS15795-808) (17), lockwashers (MS35338-138) (18), and hex nuts (MS35649-204) (19) on pressure switch (4).

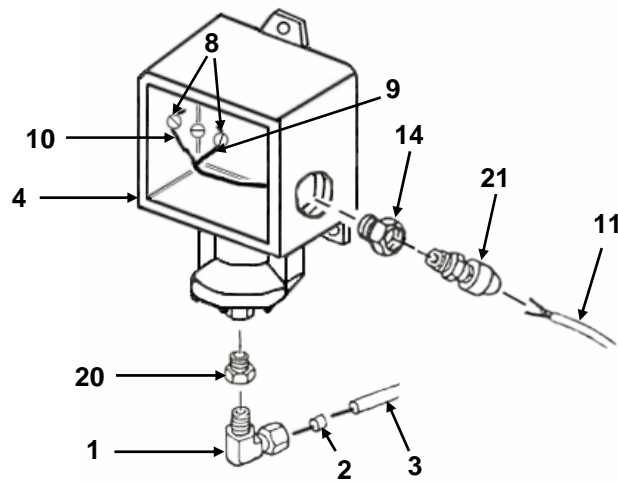


- 3) Install pipe reducer (156K0035) (20), old male elbow (1), old pipe bushing (14), new straight cable adapter (13229E0738-6) (45) on new pressure switch (4).

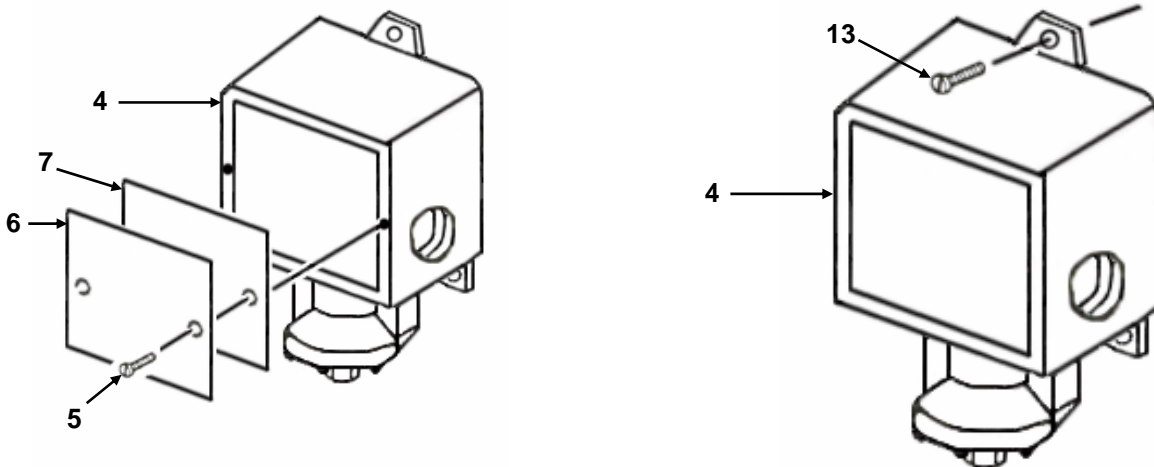
NOTE

Pressure switches have two wire terminals: white wire is located on common (C) terminal and black wire is located on normally closed (NC) terminal.

- 4) Install cable (11) through cable adapter (21); thread white (9) and black wire (10) into pressure switch (4), making sure wires are accessible to terminal screws (8).
- 5) Install white wire (9) and black wire (10) on terminal screws (8); tighten terminal screws (8).
- 6) Install marker (2) and metallic tube (3) on pressure switch (4).



- 7) Install gasket (7), pressure switch cover plate (6), and two screws (5) on pressure switch (4).
- 8) Install two screws (13) from disassembly into pressure switch (4) and control panel.



f. Pressure switch panel assembly switch replacement.

WARNING

- **Make sure electrical power is disconnected before working on unit. Failure to do so could result in electrical shock, causing serious injury or death to personnel.**

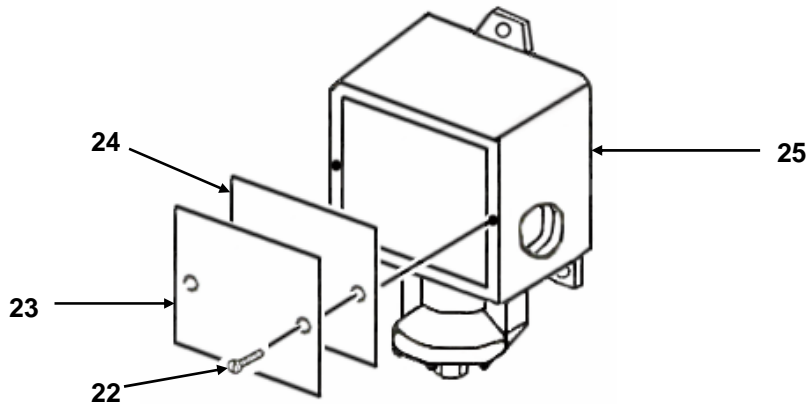
NOTE

- Refer to the switch panel assembly locator view on page 20 of this MWO to identify the location of the pressure switches.
- Replace one pressure switch and associated tubing/hoses at a time for best results.
- Disassembly of all seven pressure switches are identical, except where indicated.

NOTE

- Pressure switches PSH7 and PSH5 switch plates are located on top of switches.
- Pressure switches PSH6 and PSL4 switch plates are located on bottom of switches.
- Pressure switches PDSH1, PDSH2, and PDSH3 switch plates are located at right side of switches.

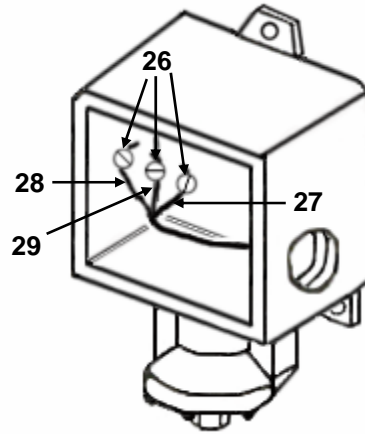
- 1) Remove two screws (22), pressure switch plate (23), and gasket (24) from pressure switch (25). Discard switch plates and gaskets.



NOTE

Pressure switches have two wire terminals: white wire is located on common (C) terminal and black wire is located on normally closed (NC) terminal. Pressure switch L4 (PSL4) cable includes a third green wire that is connected to normally open (NO) terminal.

- 2) Loosen two terminal screws (26) (three screws from pressure switch PSL4) and remove white wire (27), black wire (28), and green wire (29) (pressure switch PSL4), from terminal screws (26).



WARNING

- Make sure air pressure is vented from manifolds before working on switch panel assembly. Failure to do so could result in exposure to high air pressure, causing serious injury to personnel.
- Plastic and metallic tubes may contain pressure and cause injury to personnel. Be prepared to collect water and avoid water runoff into other components, or damage to equipment may occur.

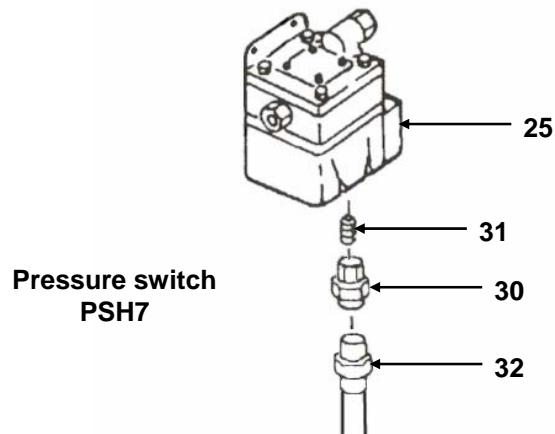
NOTE

Tag all hoses and cables before disconnecting.

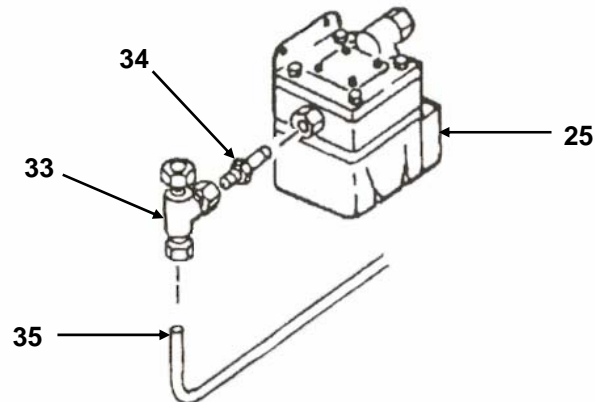
NOTE

Procedure 3 refers to disassembly of pressure switch PSH7 only.

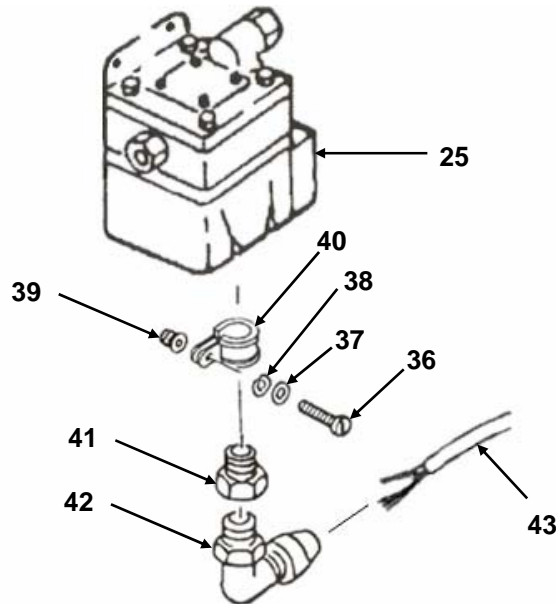
- 3) Loosen pipe union (30) and nipple (31) and remove air line (32) from pressure switch PSH7 (25). Remove and discard pipe union and nipple from air line.



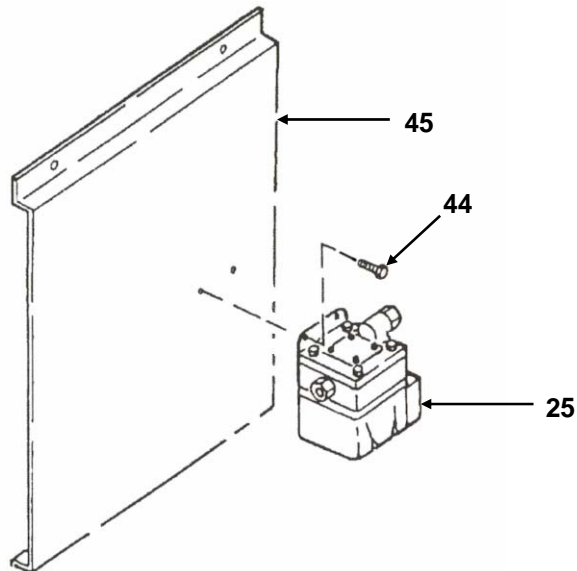
- 4) Remove tube tee (33), straight adapter (34), and metallic tube (35) from pressure switch (25). Discard tube tee, straight adapter, and metallic tube.



- 5) Remove screw (36), washer (37), lockwasher (38), and nut (39) from loop clamp (40) and discard.
- 6) Remove loop clamp (40) from pipe bushing (41) and discard.
- 7) Loosen stuffing tube (42) from pipe bushing (41).
- 8) Carefully remove cable (43) from pressure switch (25), pulling cable (43) through stuffing tube (42).
- 9) Remove pipe bushing (44) and stuffing tube (42) from pressure switch (25) and discard.



- 10) Remove two screws (44) and pressure switch (25) from pressure switch panel (45) and discard (TM 10-4610-232-34, para 2-27.1).

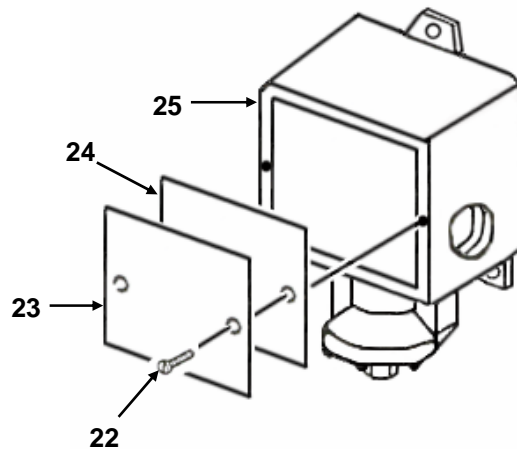


g. Pressure switch panel assembly switches installation.

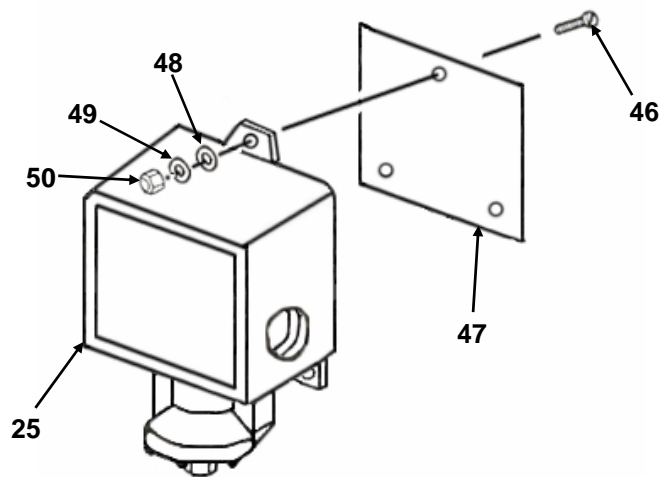
NOTE

- Assembly of all seven pressure switches are identical, except where indicated.
- Refer to the parts lists on pages 17-19 of this MWO to identify the kit parts needed to install any pressure switch.
- Refer to the switch panel assembly locator view on page 20 of this MWO to identify the location of the new pressure switches.

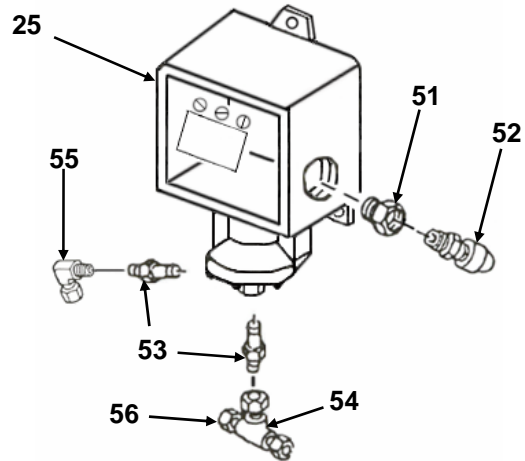
- 1) Remove two screws (22), pressure switch cover plate (23), and gasket (24) from new pressure switch (25) and set aside.



- 2) Install three countersink screws (MS51959-65) (46), adapter plate (47), three flat washers (MS15795-808) (48), lockwashers (MS35338-138) (49), and hex nuts (MS35649-204) (50) on pressure switch (25).



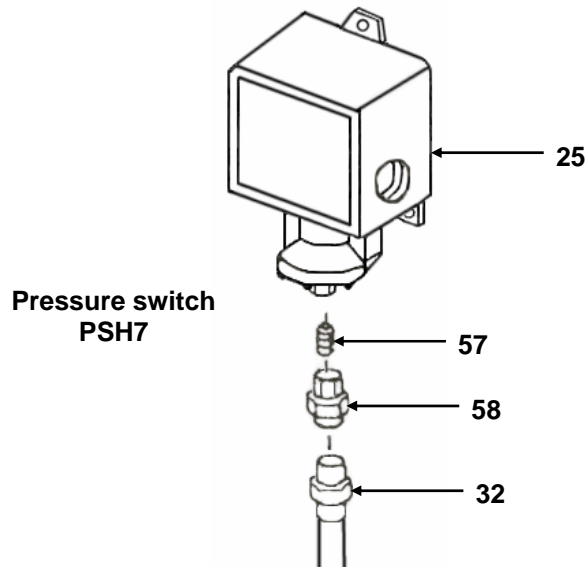
- 3) Install new hex bushing (ANS-B16.11) (51), cable adapter (52), tube adapter (156K0005) (53), tee (13229E0704-2) (54), elbow 13229E0706-1 (55) (pressure switch PDSH3 only) and plug (56), on pressure switch (25).



NOTE

Step 4 refers to pressure switch PSH7 only.

- 4) Install new nipple (13229E1255-2) (57), new pipe union (13229E0189) (58), and air line (32) on pressure switch PSH7 (25).

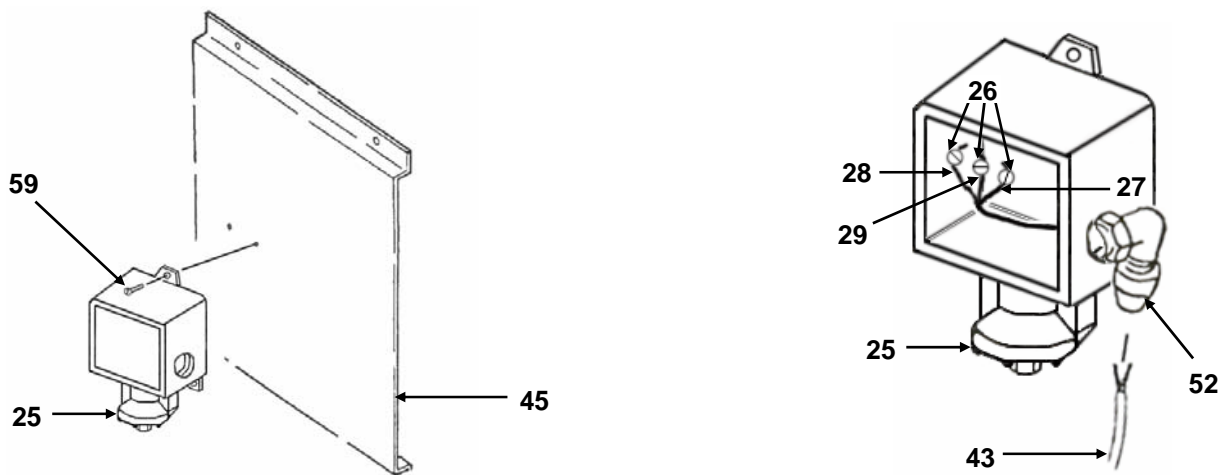


- 5) Install pressure switch (25) and three screws (MS51958-64) (59) on pressure switch panel assembly (45).

NOTE

Pressure switches have two wire terminals: white wire is located on common terminal and black wire is located on NC terminal. Pressure switch L4 (PSL4) cable includes a third green wire that is connected to normally open (NO) terminal.

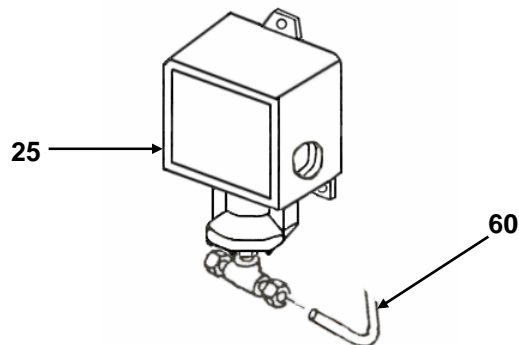
- 6) Install cable (43) through cable adapter (52) and pressure switch (25), making sure wires are accessible to terminal screws (26).
- 7) Install white wire (27), black wire (28), and green wire (29) (from pressure switch PSL4) on terminal screws (26); tighten terminal screws (26).



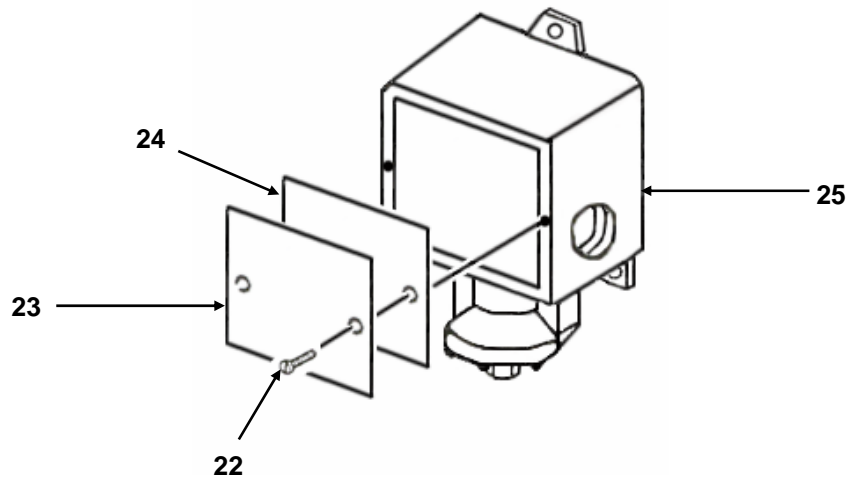
NOTE

- Refer to the switch panel assembly locator view on page 20 of this MWO to identify the location of the new tubes.
- Tube 1560001K10 is installed between pressure switches PDSH1 and PDSH2.
- Tube 1560001K13 and 1560001K69 are installed between pressure switches PDSH2 and PDSH3.
- Tube 1560001K16 is installed between pressure switches PDSH3 and PSL4.

- 8) Install new metallic tube (60) on pressure switch (25).



- 9) Install gasket (24), pressure switch cover plate (23), and two screws (22) on pressure switch (25).



NOTE

The pressure switches are preset from the manufacturer. Operate the equipment and only adjust the switches if required.

- h. Pressure switch adjustment.

- 1) Adjust pressure switches (TM 10-4610-232-34, para 2-29).

11. CALIBRATION REQUIREMENTS. Not applicable.

12. WEIGHT AND BALANCE DATA. Weight and balance are not significantly affected.

13. QUALITY ASSURANCE REQUIREMENTS. Upon receipt of the retrofit kit, the QM and Chem. Equip Repairer or supervisor shall accomplish the following:

- a. Fully inspect kit for shipping damage, using parts list in 8b of this MWO.
- b. If retrofit kit has shipping damage, report damage to supervisor, or contact MWO Coordinator/Depot.

14. RECORDING AND REPORTING OF THE MODIFICATION.

- a. *Records and Reports.* The organization responsible for MWO application will report application information as follows:

- 1) Reporting will be accomplished by electronic means. MWO application information can be input directly into the Modification Management Information System (MMIS) over the Internet. If Internet is not available, recording will be on a 3.5-inch disk, which will be mailed to the MMIS administrator. Entry into the MMIS system is password protected. New users can register online at <http://208.242.67.250/mwo>. Passwords are normally approved and issued within 48 hours.

- 2) Submission will be comprised of the nine data elements listed in the table, below. Elements 1, 2, 4, 8, and 9 are given for this MWO (as shown). The person reporting the MWO data will acquire the remaining elements (3, 5, 6, and 7), and input all nine into MMIS.

	Data Element	Input Data
1	Material change number (MCN)	1-04-08-0001
2	MWO number	10-4610-232-30-1
3	Unit identification code (UIC) at battalion level	
4	NSNs of the End Item	4610-01-371-1790
5	Serial number	
6	USA registration number	
7	Application date	
8	Hours required for application	5.0
9	Software version	n/a

- 3) For offline reporting, 3.5-inch disk should be mailed to the following address:

Commander
TACOM-Warren
ATTN: AMSTA-LC-CIPWM
Warren, MI 48397-5000

- b. *Marking Equipment.* Not applicable.
c. *Identification Data.* Not applicable.

15. MATERIEL CHANGE (MC) NUMBER. This MWO is authorized by MC number 1-04-08-0001.

16. MODIFICATION IDENTIFICATION. A modified ROWPU-1 can be identified by the Ashcroft pressure switches.

PRESSURE SWITCHES PARTS REFERENCE LISTS

PRESSURE SWITCH (PSL8) ASSEMBLY		
DESCRIPTION	PART NUMBER	QTY
Switch, Pressure	500K2357-5	1
Plate, Adapter	156K0034	1
Washer, Flat	MS15795-808	2
Washer, Lock	MS35338-138	2
Nut, Hex	MS35649-204	2
Screw, Countersink	MS51959-65	2
Pipe Reducer	156K0035	1
Adapter, Cable Straight	13229E0738-6	1

PRESSURE DIFFERENTIAL SWITCH (PDSH1) ASSEMBLY		
DESCRIPTION	PART NUMBER	QTY
Switch, Pressure Differential	500K2358-2	1
Adapter, Tube	156K0005	2
Tee	13229E0704-2	2
Plug	13229E0382	1
Bushing, Hex	ANSI-B16.11	1
Adapter Cable, Straight	13229E0738-6	1
Washer, Flat	MS15795-808	3
Washer, Lock	MS35338-138	3
Nut, Hex	MS35649-204	3
Plate, Adapter	156K0006	1
Screw, Countersink	MS51959-65	3

PRESSURE DIFFERENTIAL SWITCH (PDSH2) ASSEMBLY		
DESCRIPTION	PART NUMBER	QTY
Switch, Pressure Differential	500K2358-1	1
Adapter, Tube	156K0005	2
Tee	13229E0704-2	2
Plug	13229E0382	1
Bushing, Hex	ANSI-B16.11	1
Adapter Cable, Elbow	13229E0753-4	1
Washer, Flat	MS15795-808	3
Washer, Lock	MS35338-138	3
Nut, Hex	MS35649-204	3
Plate, Adapter	156K0004	1
Screw, Countersink	MS51959-65	3

PRESSURE SWITCHES PARTS REFERENCE LISTS (CONTINUED)

PRESSURE DIFFERENTIAL SWITCH (PDSH3) ASSEMBLY		
DESCRIPTION	PART NUMBER	QTY
Switch, Pressure Differential	500K2358-2	1
Adapter, Tube	156K0005	2
Tee	13229E0704-2	2
Bushing, Hex	ANSI-B16.11	1
Adapter Cable, Elbow	13229E0753-4	1
Washer, Flat	MS15795-808	3
Washer, Lock	MS35338-138	3
Nut, Hex	MS35649-204	3
Plate, Adapter	156K0004	1
Screw, Countersink	MS51959-65	3
Elbow	13229E0706-1	1

PRESSURE SWITCH (PSL4) ASSEMBLY		
DESCRIPTION	PART NUMBER	QTY
Switch, Pressure	500K2357-1	1
Adapter, Tube	156K0005	2
Tee	13229E0704-2	2
Plug	13229E0382	1
Bushing, Hex	ANSI-B16.11	1
Adapter Cable, Elbow	13229E0753-4	1
Washer, Flat	MS15795-808	3
Washer, Lock	MS35338-138	3
Nut, Hex	MS35649-204	3
Plate, Adapter	156K0003	1
Screw, Countersink	MS51959-65	3

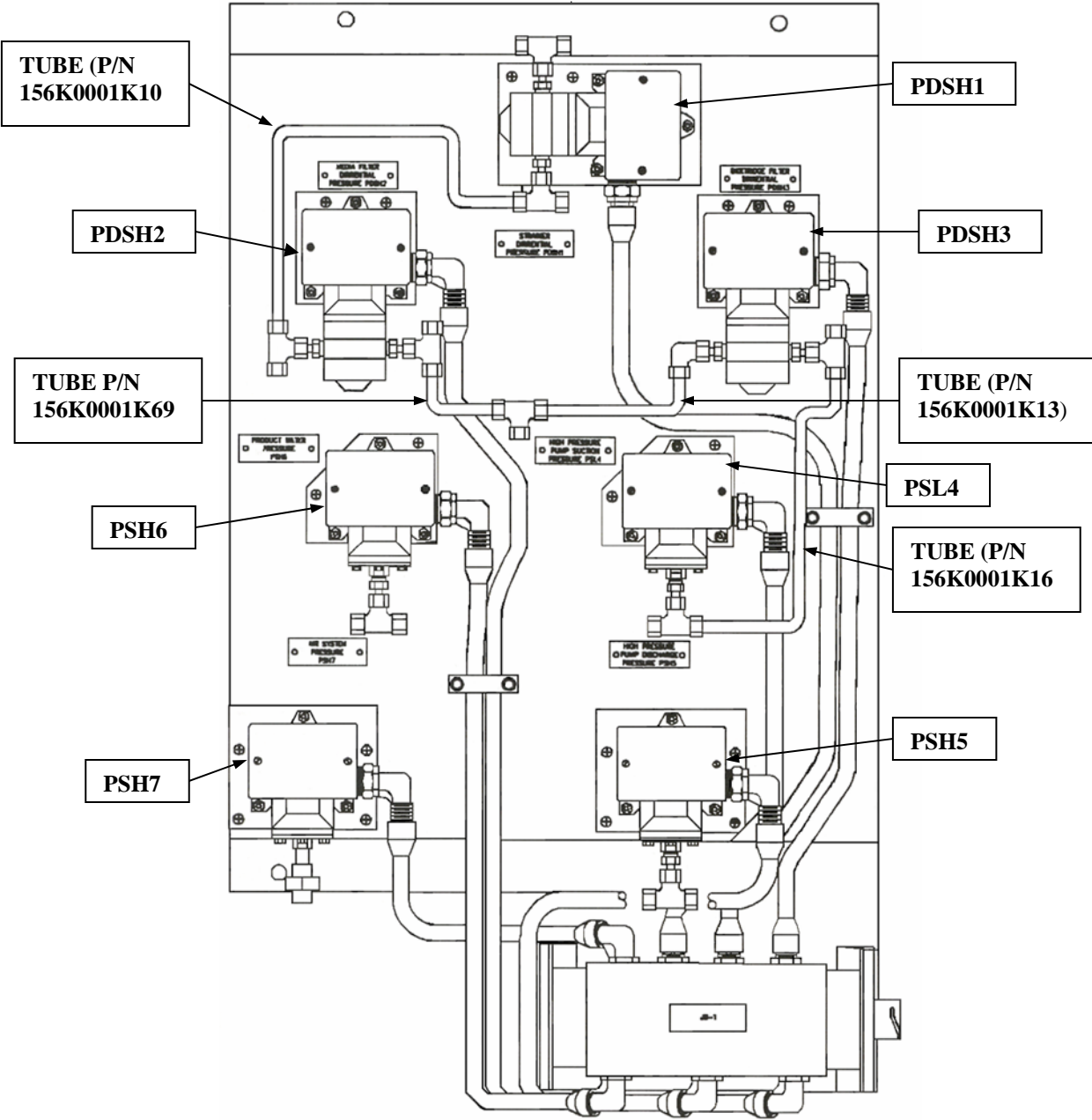
PRESSURE SWITCH (PSH5) ASSEMBLY		
DESCRIPTION	PART NUMBER	QTY
Switch, Pressure	500K2357-3	1
Bushing, Hex	ANSI-B16.11	1
Adapter Cable, Elbow	13229E0753-4	1
Washer, Flat	MS15795-808	3
Washer, Lock	MS35338-138	3
Nut, Hex	MS35649-204	3
Plate, Adapter	156K0002	1
Screw, Countersink	MS51959-65	3

PRESSURE SWITCHES PARTS REFERENCE LISTS (CONTINUED)

PRESSURE SWITCH (PSH6) ASSEMBLY		
DESCRIPTION	PART NUMBER	QTY
Switch, Pressure	500K2357-2	1
Adapter, Tube	156K0005	2
Tee	13229E0704-2	2
Plug	13229E0382	1
Bushing, Hex	ANSI-B16.11	1
Adapter Cable, Elbow	13229E0753-4	1
Washer, Flat	MS15795-808	3
Washer, Lock	MS35338-138	3
Nut, Hex	MS35649-204	3
Plate, Adapter	156K0003	1
Screw, Countersink	MS51959-65	3

PRESSURE SWITCH (PSH7) ASSEMBLY		
DESCRIPTION	PART NUMBER	QTY
Switch, Pressure	500K2357-4	1
Bushing, Hex	ANSI-B16.11	1
Adapter Cable, Elbow	13229E0753-4	1
Washer, Flat	MS15795-808	3
Washer, Lock	MS35338-138	3
Nut, Hex	MS35649-204	3
Plate, Adapter	156K0002	1
Screw, Countersink	MS51959-65	3
Nipple	13229E1255-2	1
Union	13229E0189	1

PRESSURE SWITCH PANEL ASSEMBLY SWITCHES AND TUBES LOCATOR VIEW



BY ORDER OF THE SECRETARY OF THE ARMY:

PETER J. SCHOOMAKER
General, United States Army
Chief of Staff

Official:



Administrative Assistant to the
Secretary of the Army

0413403

DISTRIBUTION:

To be distributed in accordance with the initial distribution requirements for IDN: 256799,
requirements for MWO 10-4610-232-30-1.

These are the instructions for sending an electronic 2028

The following format must be used if submitting an electronic 2028. The subject line must be exactly the same and all fields must be included; however only the following fields are mandatory:

1, 3, 4, 5, 6, 7, 8, 9, 10, 13, 15, 16, 17, and 27.

From: "Whomever" <whomever@avma27.army.mil>
To: TACOM-TECH-PUBS@ria.army.mil
Subject: DA Form 2028

1. From: Joe Smith
2. Unit: home
3. Address:4300 Park
4. City: Hometown
5. St: MO
6. Zip: 77777
7. Date Sent: 19-OCT-93
8. Pub no: 55-2840-249-23
9. Pub Title: TM
10. Publication Date: 04-JUL-85
11. Change Number: 7
12. Submitter Rank: MSG
13. Submitter FName: Joe
14. Submitter MName: T
15. Submitter LName: Smith
16. Submitter Phone: 123-123-1234
17. Problem: 1
18. Page: 1
19. Paragraph: 3
20. Line: 4
21. NSN: 5
22. Reference: 6
23. Figure: 7
24. Table: 8
25. Item: 9
26. Total: 123
27. Text:

This is the text for the problem below line 27.

RECOMMENDED CHANGES TO PUBLICATIONS AND BLANK FORMS						Use Part II (<i>reverse</i>) for Repair Parts and Special Tool Lists (RPSTL) and Supply Catalogs/Supply Manuals (SC/SM).	DATE
For use of this form, see AR 25-30; the proponent agency is OAASA							
TO: (<i>Forward to proponent of publication or form</i>) (<i>Include ZIP Code</i>)						FROM: (<i>Activity and location</i>) (<i>Include ZIP Code</i>)	
PART I - ALL PUBLICATIONS (EXCEPT RPSTL AND SC/SM) AND BLANK FORMS							
PUBLICATION/FORM NUMBER						DATE	TITLE
MWO 10-4610-232-30-1						30 June 2003	ROWPU-1 Pressure Switch Panel Assembly Upgrade
ITEM	PAGE	PARA- GRAPH	LINE	FIGURE NO.	TABLE	RECOMMENDED CHANGES AND REASON	
<i>* Reference to line numbers within the paragraph or subparagraph.</i>							
TYPED NAME, GRADE OR TITLE						TELEPHONE EXCHANGE/AUTOVON, PLUS EXTENSION	SIGNATURE

TO: (Forward direct to addressee listed in publication)	FROM: (Activity and location) (Include ZIP Code)	DATE
--	---	------

PART II - REPAIR PARTS AND SPECIAL TOOL LISTS AND SUPPLY CATALOGS/SUPPLY MANUALS

PUBLICATION NUMBER	DATE	TITLE
--------------------	------	-------

PAGE NO.	COLM NO.	LINE NO.	NATIONAL STOCK NUMBER	REFERENCE NO.	FIGURE NO.	ITEM NO.	TOTAL NO. OF MAJOR ITEMS SUPPORTED	RECOMMENDED ACTION

PART III - REMARKS (Any general remarks or recommendations, or suggestions for improvement of publications and blank forms. Additional blank sheets may be used if more space is needed.)

--

TYPED NAME, GRADE OR TITLE	TELEPHONE EXCHANGE/AUTOVON, PLUS EXTENSION	SIGNATURE
----------------------------	--	-----------

RECOMMENDED CHANGES TO PUBLICATIONS AND BLANK FORMS						Use Part II (<i>reverse</i>) for Repair Parts and Special Tool Lists (RPSTL) and Supply Catalogs/Supply Manuals (SC/SM).	DATE
For use of this form, see AR 25-30; the proponent agency is OAASA							
TO: (<i>Forward to proponent of publication or form</i>) (<i>Include ZIP Code</i>)						FROM: (<i>Activity and location</i>) (<i>Include ZIP Code</i>)	
PART I - ALL PUBLICATIONS (EXCEPT RPSTL AND SC/SM) AND BLANK FORMS							
PUBLICATION/FORM NUMBER						DATE	TITLE
MWO 10-4610-232-30-1						30 June 2003	ROWPU-1 Pressure Switch Panel Assembly Upgrade
ITEM	PAGE	PARA- GRAPH	LINE	FIGURE NO.	TABLE	RECOMMENDED CHANGES AND REASON	
<i>* Reference to line numbers within the paragraph or subparagraph.</i>							
TYPED NAME, GRADE OR TITLE						TELEPHONE EXCHANGE/AUTOVON, PLUS EXTENSION	SIGNATURE

TO: (Forward direct to addressee listed in publication)	FROM: (Activity and location) (Include ZIP Code)	DATE
--	---	------

PART II - REPAIR PARTS AND SPECIAL TOOL LISTS AND SUPPLY CATALOGS/SUPPLY MANUALS

PUBLICATION NUMBER	DATE	TITLE
--------------------	------	-------

PAGE NO.	COLM NO.	LINE NO.	NATIONAL STOCK NUMBER	REFERENCE NO.	FIGURE NO.	ITEM NO.	TOTAL NO. OF MAJOR ITEMS SUPPORTED	RECOMMENDED ACTION

PART III - REMARKS (Any general remarks or recommendations, or suggestions for improvement of publications and blank forms. Additional blank sheets may be used if more space is needed.)

--

TYPED NAME, GRADE OR TITLE	TELEPHONE EXCHANGE/AUTOVON, PLUS EXTENSION	SIGNATURE
----------------------------	--	-----------

RECOMMENDED CHANGES TO PUBLICATIONS AND BLANK FORMS						Use Part II (<i>reverse</i>) for Repair Parts and Special Tool Lists (RPSTL) and Supply Catalogs/Supply Manuals (SC/SM).	DATE
For use of this form, see AR 25-30; the proponent agency is OAASA							
TO: (<i>Forward to proponent of publication or form</i>) (<i>Include ZIP Code</i>)						FROM: (<i>Activity and location</i>) (<i>Include ZIP Code</i>)	
PART I - ALL PUBLICATIONS (EXCEPT RPSTL AND SC/SM) AND BLANK FORMS							
PUBLICATION/FORM NUMBER						DATE	TITLE
MWO 10-4610-232-30-1						30 June 2003	ROWPU-1 Pressure Switch Panel Assembly Upgrade
ITEM	PAGE	PARA- GRAPH	LINE	FIGURE NO.	TABLE	RECOMMENDED CHANGES AND REASON	
<i>* Reference to line numbers within the paragraph or subparagraph.</i>							
TYPED NAME, GRADE OR TITLE						TELEPHONE EXCHANGE/AUTOVON, PLUS EXTENSION	SIGNATURE

TO: (Forward direct to addressee listed in publication)	FROM: (Activity and location) (Include ZIP Code)	DATE
--	---	------

PART II - REPAIR PARTS AND SPECIAL TOOL LISTS AND SUPPLY CATALOGS/SUPPLY MANUALS

PUBLICATION NUMBER	DATE	TITLE
--------------------	------	-------

PAGE NO.	COLM NO.	LINE NO.	NATIONAL STOCK NUMBER	REFERENCE NO.	FIGURE NO.	ITEM NO.	TOTAL NO. OF MAJOR ITEMS SUPPORTED	RECOMMENDED ACTION

PART III - REMARKS (Any general remarks or recommendations, or suggestions for improvement of publications and blank forms. Additional blank sheets may be used if more space is needed.)

--

TYPED NAME, GRADE OR TITLE	TELEPHONE EXCHANGE/AUTOVON, PLUS EXTENSION	SIGNATURE
----------------------------	--	-----------

PIN: 081510-000